



PVC Cable Trunking PVC Electrical Conduit Since 1996



Jack YOUNG

Export Manager

Yiwu Xishun Trading Co., Ltd

Zhuji Xishun Plumbing Fittings Factory Co., Ltd.

Mp.: +86-15205799916

Skype: jackyang535

QQ: 359934365

Email: xspipefittings@163.com

Web: www.pprpipefittings.com

Add.: F5-19814, 29th Gate, Yiwu City,
Zhejiang Province, China



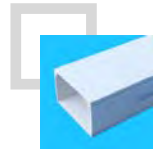
Scan to get contact detail

CONTENTS

目录



Company Profile



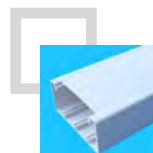
PVC Cable Trunking



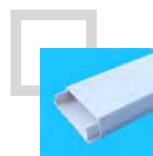
PVC Electrical Conduit



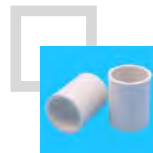
PVC Arc Floor Trunking



PVC Compartment Trunking



PVC Trapezoid Trunking



Fittings and Accessories

Certificate and Patent



Company Profiles

Workers: 150
R&D Staff: 10
QC Staff: 15
Sales person: 15
Area: 20,000 Square Meters
Annual Sales Volume: 100 million.
Certificate: GB/T19001-2008, ISO9001:2008
Exhibition: Canton Fair (Twice a Year)



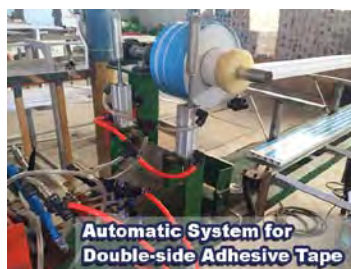
xishun is listed among the acclaimed manufacturers and traders of PVC Electrical Cable Trunking and PVC Conduit, with 30 manufacturing facilities located strategically in South China. Shingfong use best quality powder and innovative technology, the cable trunking and conduit are widely known for high durability. These cable trunking are resistant to corrosion and can be easily installed. Cable trunking can be conveniently fitted in ceiling, wall, and floor. Highly reliable PVC Electrical Cable Trunking is used to protect cable network.

20
Years
Manufacturing, R&D

30
Facilities
Production Lines

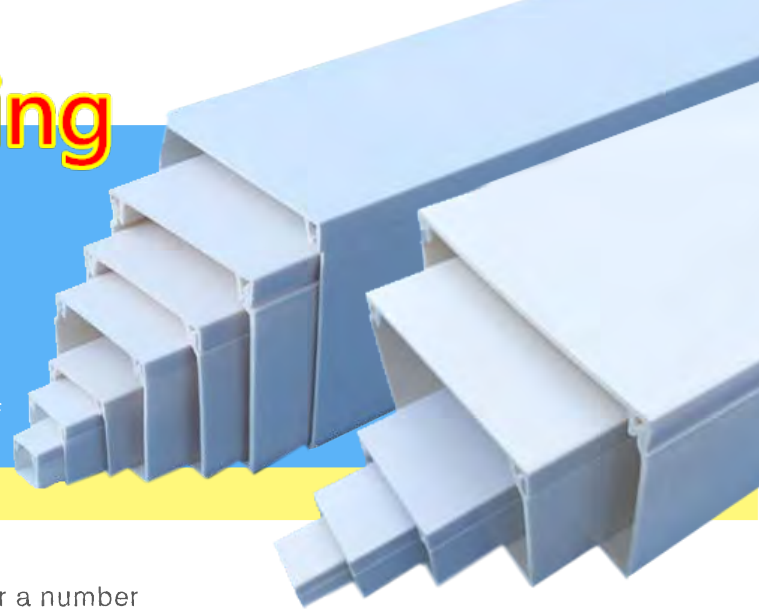
50
Loading
50x40HQ monthly

Company Style



PVC Cable Trunking

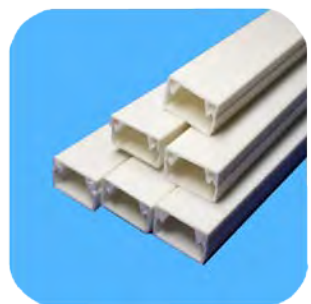
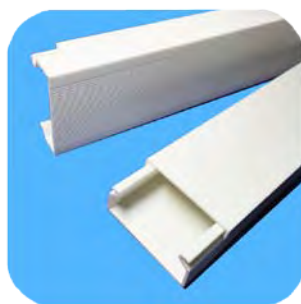
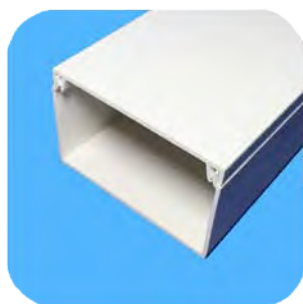
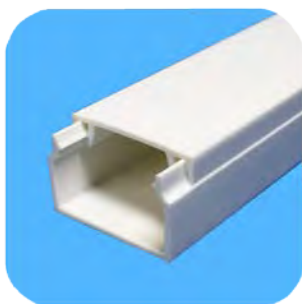
- **Function:** Cabling
- **Material:** PVC
- **Configuration:** Rigid
- **Width:** Max: 200mm Min: 10mm
- **Height:** Max: 100mm Min: 9mm
- **Feature:** High Performance, Light in weight, Weather proof



xishun' s PVC trunking range is the perfect solution for a number of cable management project installations, including domestic and commercial installs. Adhesive foam tape backing is available for absorbing unwanted and uneven surfaces. It's supplied in more than 200 different size and thickness. They are available with a range of accessories and fittings. Using this trunking, in addition, it is advisable to use screw and wall plugs attachment for certain applications.

Product Description

Material	High impact resistant PVC compound, giving a durable yet versatile finish.
Work Temperature	Can be operated between a temperature range of -40° C to 65° C.
Structure	Made up of duct bottom and lid.
Available Color	* White or grey colors for a perfect integration in any environment; * Customized color is available;
Size	Comes in 44 sizes, from min. 10x10mm to max. 200x100mm;
Application	The lid can be snapped into place with ease, making the product ideal for "moves, adds and changes".
Usage	PVC trunking allows for both power and data cables to be installed within commercial and domestic buildings, making it the ideal product for new builds and refurbishments.
Feature	<ul style="list-style-type: none">• Good insulation, able to resist 25KV voltage, assuring a safe system;• Solid design, especially for anti-dust and mouse;• Combustion-proof, damp-proof, alkali-resistant, aging-resistant;• Easy installation, light weight, easy to cut, transport, bent and handle;• Easy to connect by solvent cement & threading joining without leakage.



PVC Cable Trunking



15x10mm



18x9mm



25x16mm



40x25mm



50x25mm



60x40mm



80x50mm



100x40mm



100x50mm



200x100mm

PVC Square Trunking



10x10mm



12x12mm



16x16mm



20x20mm



25x25mm



40x40mm



50x50mm



60x60mm



75x75mm



100x100mm

Characteristic of PVC Trunking

Various Sizes

Available in more than 200 different size and thickness

Adhesive backing available

Available with an adhesive backing, making it quick and easy to install

Snap on lids

Easy to snap on and snap off, making cables easy to install



Parameter

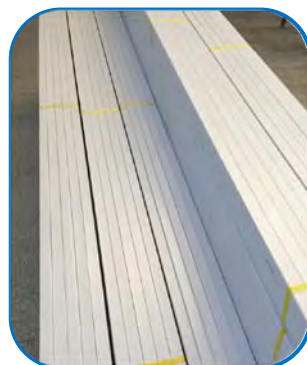
Unit: mm

W x H	Thickness (mm)	PCS /PKG	W x H	Thickness (mm)	PCS /PKG
10x10	0.55/ 0.65	50	50x40	1.3	10
12x12	0.6	50	50x50	1.10/ 1.25/ 1.5	8
15x10	0.58/ 0.7/ 0.8/ 1.0	30	59x22	1.3/ 1.0	10
16x16	0.58/ 0.7/ 0.8/1.0	30	60x22	1.2/ 1.0/ 0.85	10
18x9	0.7/ 0.58	30	60x40	1.7/ 1.5/ 1.4/ 1.2	6
20x10z	0.8	25	60x60	1.2/ 1.6	6
20x10	0.95/ 0.85/ 0.80/ 0.75/ 0.65	25	75x50	2.0/ 1.7/ 1.4/ 1.25/ 1.1	4
20x20	0.8/ 0.9/ 1.0/ 1.2/ 1.4	30	75x75	1.3/ 1.6/ 1.8	2
24x14	0.9/ 0.8/ 0.7/ 0.65/ 0.6/ 0.55	25	80x40	1.2/ 1.5	4
25x16z	1.0	25	80x50	1.2/ 1.6/ 1.8	4
25x16	1.2/ 1.1/ 1.0/ 0.85/ 0.75/ 0.65/ 0.6	20	80x60	1.4	4
25x25	0.75/ 0.85/ 1.0/ 1.25	25	100x27	1.2/ 1.4	5
30x13	0.8/ 0.7/ 0.6	20	100x40	1.3/ 1.5/ 1.7	4
30x15	0.85/ 0.65	20	100x50	1.3/ 1.75	4
33x33	1.0	16	100x60	1.4/ 1.8/ 2.0	2
36x16	1.3/ 1.0/ 0.8/ 0.65	15	100x75	1.5/ 1.8	2
38x18	1.1/ 0.9/ 0.75	15	100x100	1.5/ 1.8/ 1.9	2
39x19	1.0/ 0.9/ 0.8/ 0.7	15	120x60	2.00	2
40x16	1.25/ 1.0/ 0.85/0.7	15	120x80	2.30	2
40x25	1.5/ 1.4/ 1.3/ 1.2/ 1.0/ 0.9/ 0.8/ 0.7	12	150x50	2.30	2
40x40	0.85/ 1.0/ 1.3	9	150x100	2.40	2
50x25	1.2/ 1.0/ 0.75	10	200x100	2.30	1

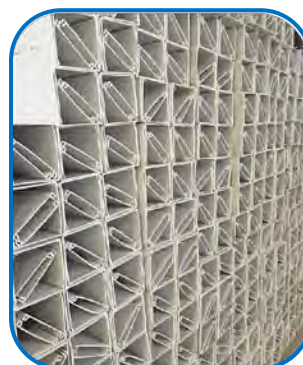
Remarks: We could adjust the thickness according to client's request.



With fiber rope



With Packing Belt



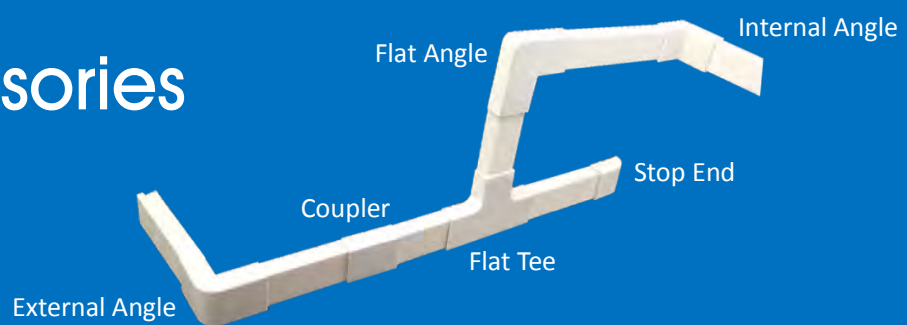
take out the cover
put into the body



smaller trunking
insert into bigger one

Fittings & Accessories

For PVC Trunking >>>



Coupler

Size(mm)	PCS/Box
24x14	200
39x19	100
40x30	60
50x25	128
50x40	104
60x22	100
60x30	90
60x40	68
80x40	80
80x50	68
100x27	100
100x40	60
100x50	36
100x60	40



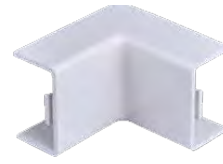
Flat Angle

Size(mm)	PCS/Box
20x10	100
24x14	100
39x19	100
40x30	112
50x25	64
50x40	50
60x22	100
60x30	50
60x40	78
80x40	40
80x50	30
100x27	50
100x40	40
100x50	30
100x60	20



Flat Tee

Size(mm)	PCS/Box
20x10	100
24x14	100
39x19	100
40x30	58
50x25	44
50x40	48
60x22	100
60x30	40
60x40	60
80x40	40
80x50	30
100x27	50
100x40	28
100x50	26
100x60	18



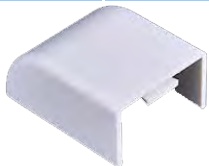
External Angle

Size(mm)	PCS/Box
20x10	100
24x14	120
39x19	100
40x30	180
50x25	100
50x40	60
60x22	100
60x30	96
60x40	100
80x40	50
80x50	40
100x27	50
100x40	25
100x50	20
100x60	22



Internal Angle

Size(mm)	PCS/Box
20x10	100
24x14	100
39x19	100
40x30	100
50x25	84
50x40	48
60x22	100
60x30	50
60x40	80
80x40	60
80x50	36
100x27	50
100x40	40
100x50	35
100x60	24



Stop End

Size(mm)	PCS/Box
24x14	100
39x19	100
40x30	144
50x25	100
50x40	60
60x22	100
60x30	80
60x40	100
80x40	60
80x50	50
100x27	50
100x40	56
100x50	36
100x60	32



Box-style Elbow

Size(mm)	PCS/Box
24x14	100
39x19	100
60x22	50
60x40	30
80x40	25
80x50	18
100x27	20
100x40	18
100x60	10



Box-style Flat Tee

Size(mm)	PCS/Box
24x14	50
39x19	100
60x22	50
60x40	20
80x40	24
80x50	15
100x27	20
100x40	15
100x60	10



Box-style Flat Cross

Size(mm)	PCS/Box
24x14	50
39x19	50
60x22	35
60x40	20
80x40	20
80x50	15
100x27	12
100x40	9
100x60	4



Switch Box

Size(mm)	PCS/Box
77x77	43
86x86x34	34
86x86deep	46

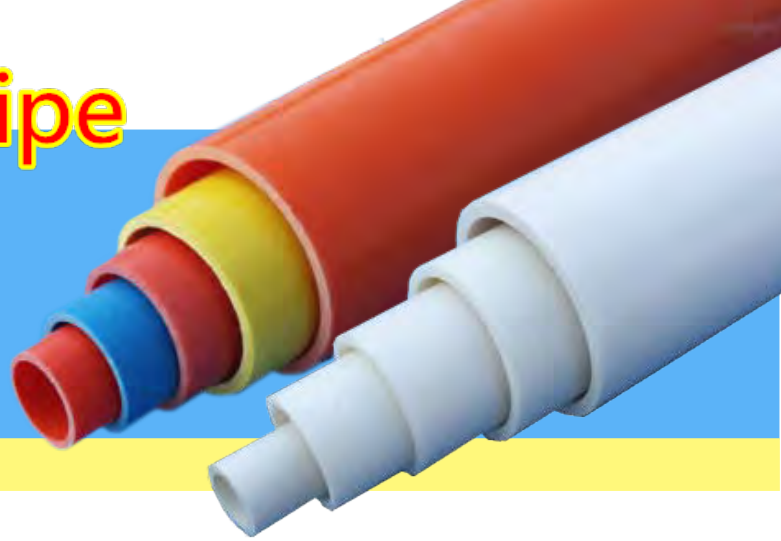


Box Cover

Size(mm)	PCS/Box
77x77	100
86x86	80

PVC Electrical Pipe

- Commercial, Industrial and Utility Usage
- Corrosion Resistant
- Non-Magnetic and non-galvanic
- Self Extinguishing
- Impact Resistant



Xishun offers a complete line of rigid PVC Conduit, pliable conduit and fittings. Their application is especially recommended in buildings with high concentrations of people or assets, such as residential buildings, offices, hospitals, schools and hotels. Shingfong PVC conduit and duct is proven durable and effective for years of maintenance-free performance in underground, encased and exposed applications.

Product Description

Material	Rigid PVC.
Work Temperature	Can be operated between a temperature range of -40° C to 65° C.
Available Color	* Regular color: white, grey, red, orange, blue, yellow; * Customized color is available;
Size	Comes in 7 sizes, from min. 10mm to max. 50mm;
Usage	For versatile use as insulating protection for concealed cabling or surface installations.
Feature	<ul style="list-style-type: none">• Quick, easy installation, labor saving, and reduced total job time.• Corrosion proof, typically not affected by corrosive soils or salts.• Non-Magnetic and Non-Galvanic• nonconductive and non-sparking.• Fire Resistant• Reliable joint & Easy Pull Through• Tough, durable, with high tensile strength, yet easy to handle and install right on the jobsite



PVC Electrical Conduit



Φ 10mm



Φ 16mm



Φ 20mm



Φ 25mm



Φ 32mm

PARAMETER

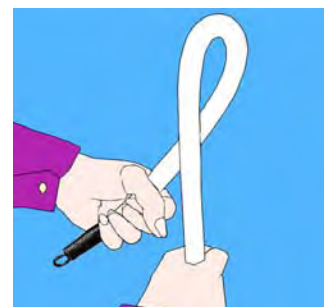
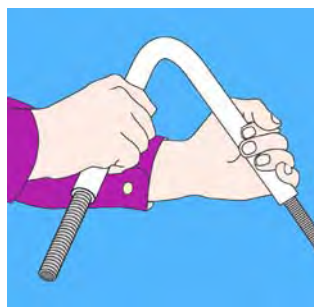
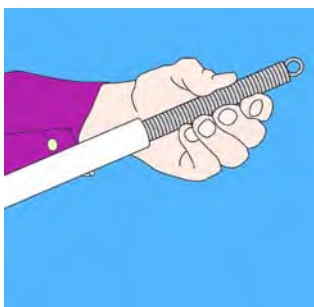
Unit: mm

Diameter	Thickness	PCS /PKG
Φ10	1.10	50
Φ16	1.1/ 1.3	30
Φ20	1.2/ 1.4	25
Φ25	1.3/ 1.6	20
Φ32	1.7/ 2.0	10
Φ40	1.8/ 2.2	10
Φ50	2.0/ 2.5	25
Φ75	2.5/ 3.0	10



Remarks: We could adjust the thickness according to client's request.

Bending Method

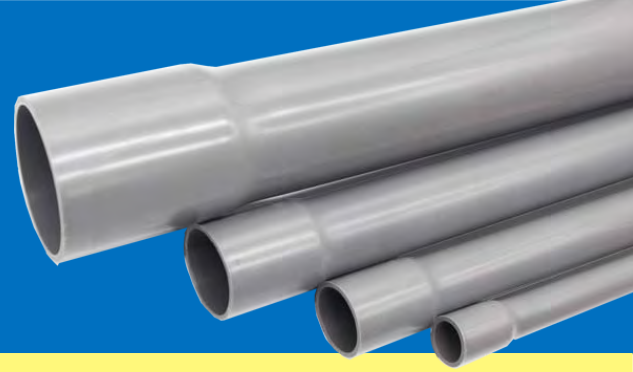


- 1) Choose a spring fit with the size of PVC Pipe.
- 2) Curve the pipe after inserting spring at the place of pipe where you need it be bent.

Effect: PVC pipe can be bent from 5 ° to 180 ° without broken.

Advantage: Client can bend the pipe at the corner without using elbow.

PVC Electrical Conduit With one end Socket



Automatic Expansion Machine for PVC Pipe



PVC Bending Conduit Made Protective Fence



Light in weight and Convenient

PVC fence is light in weight, making it easy to carry and transport.

Easy install

The entire design is based on a combination of components, making it easy to repair and replace parts

Robust and Durable

High quality materials, smooth surface, effectively resist collision, anti-oxidation, anti-corrosion

Fittings & Accessories

For PVC Conduit >>>



Coupling

Size(mm)	PCS/PKG
Φ16	100
Φ20	100
Φ25	100
Φ32	100
Φ40	100
Φ50	270



Elbow

Size(mm)	PCS/PKG
Φ16	100
Φ20	100
Φ25	100
Φ32	100
Φ40	70
Φ50	100



Tee

Size(mm)	PCS/PKG
Φ16	100
Φ20	100
Φ25	100
Φ32	100
Φ40	100
Φ50	128



Pipe Clip(with expansionary bolt)

Size(mm)	PCS/PKG
Φ16	100
Φ20	100
Φ25	100
Φ32	100
Φ40	100
Φ50	270



Reducer

Size(mm)	PCS/PKG
20x16	100
25x20	100
32x20	100
40x32	100
50x32	100
50x40	100



Female Adapter

Size(mm)	PCS/PKG
Φ16	100
Φ20	100
Φ25	100
Φ32	100
Φ40	100
Φ50	50



1-way End Box

Size(mm)	PCS/PKG
60x16	34
65x20	34
65x25	40



2-way End Box

Size(mm)	PCS/PKG
65x16	34
65x20	34
65x25	40



3-way Tee Box

Size(mm)	PCS/PKG
65x16	34
65x20	34
65x25	40



4-way Intersection Box

Size(mm)	PCS/PKG
65x16	34
65x20	34
65x25	40



Elbow with Cover

Size(mm)	PCS/PKG
Φ20	100
Φ25	100
Φ32	50
Φ40	30

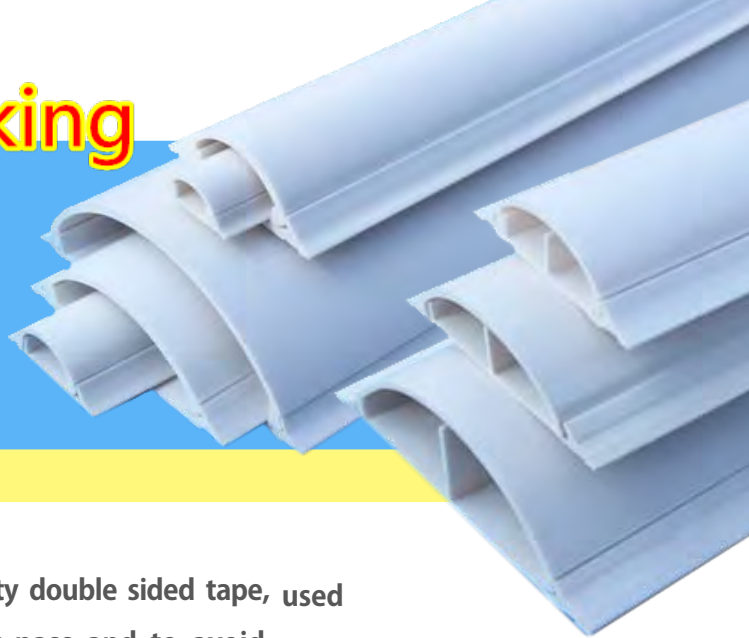


Tee with Cover

Size(mm)	PCS/PKG
Φ20	50
Φ25	50
Φ32	50
Φ40	25

PVC Arc Floor Trunking

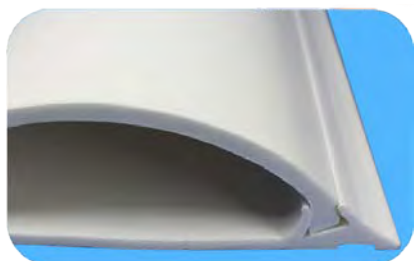
- Standard Length: 2000mm
- Standard Color: Grey
- Provide great cable protection
- Shock resistant and self-extinguishing thermoplastic
- Lead-free material



Xishun PVC Arc Floor Trunking backed with high quality double sided tape, used for permanent fixture floor wiring to facilitate trolley pass and to avoid tripping, especially in public places, like shopping malls, hospitals, and stations. The bottom of duct can be stuck with double-coated tape then fasten on the floor easily.

Product Description

Material	PVC.
Work Temperature	Can be operated between a temperature range of -40° C to 65° C.
Structure	Made up of duct bottom and lid.
Available Color	* Regular color: White, Grey; * Customized color is available;
Size	Comes in 5 sizes, from min. 25x8mm to max. 100x30mm;
Feature	<ul style="list-style-type: none">• Good insulation, able to resist 25KV voltage, assuring a safe system;• Solid design, especially for anti-dust and mouse;• Combustion-proof, damp-proof, alkali-resistant, aging-resistant;• Easy installation, light weight, easy to cut, transport, bent and handle;• Easy to connect by solvent cement & threading joining without leakage.



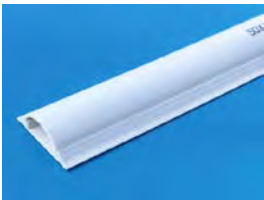
PVC Arc Floor Trunking



25x8mm



35x10mm



50x15mm



70x20mm

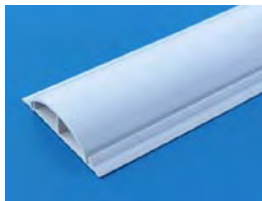


100x30mm

PVC Arc Compartment Trunking



50x15mm



70x20mm



100x30mm

PARAMETER

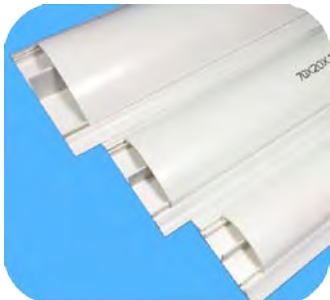
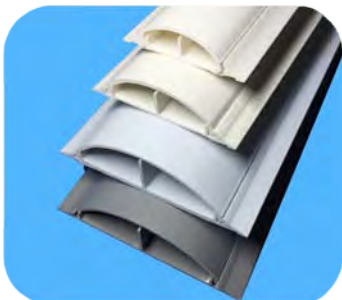
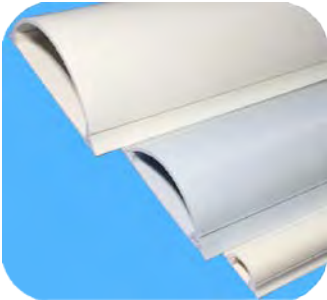
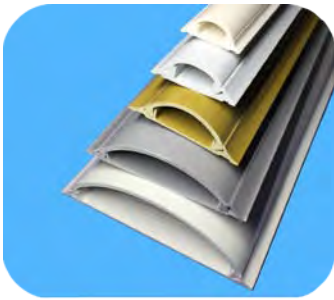
Unit: mm

PVC Arc Floor Trunking

Size(mm)	Thickness(mm)	PCS/PKG
25x8	1.25	30
35x10	1.4	30
50x15	1.8	20
70x20	2.1	10
100x30	2.3	5

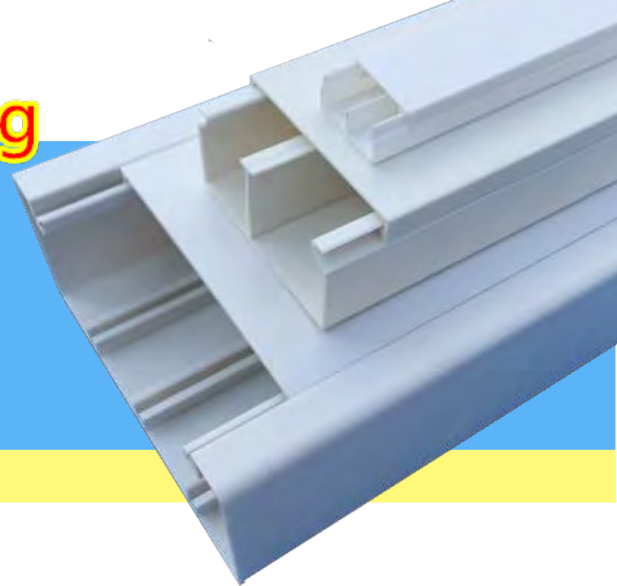
PVC Arc Compartment Trunking

Size(mm)	Thickness(mm)	PCS/PKG
50x15	1.5	30
70x20	1.7	30
100x30	2.0	20



PVC Compartment Trunking

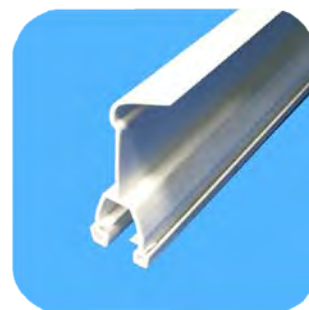
- A range of modular multi compartment PVC trunking
- A large range of sizes, cable capacities, colours and finishes
- Giving optimum cable performance
- Available with electromagnetic shielding



Shingfong's PVC Compartment Trunking is a single compartment trunking system, which can be subdivided by means of a dividing strip to accommodate power, data and telecommunication cables. The positions of the divider fixing points allow the trunking to be split into two, three or four compartments depending on the installation requirements.

Product Description

Material	High impact resistant PVC compound, giving a durable yet versatile finish.
Work Temperature	Can be operated between a temperature range of -40° C to 65° C.
Structure	Made up of duct bottom and lid.
Available Color	* White or grey colors for a perfect integration in any environment; * Customized color is available;
Size	Comes in 3 sizes, from min. 20x10mm to max. 100x50mm;
Usage	PVC trunking allows for both power and data cables to be installed within commercial and domestic buildings
Feature	<ul style="list-style-type: none">• Good insulation, able to resist 25KV voltage, assuring a safe system;• Solid design, especially for anti-dust and mouse;• Combustion-proof, damp-proof, alkali-resistant, aging-resistant;• Easy installation, light weight, easy to cut, transport, bent and handle;• Easy to connect by solvent cement & threading joining without leakage.



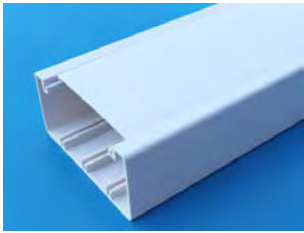
PVC Compartment Trunking



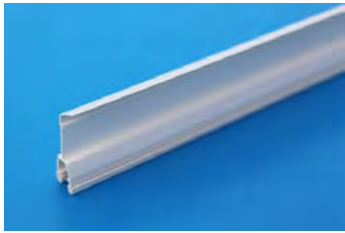
20x10mm



50x25mm



100x50mm



PVC Divided Strip

PARAMETER

Unit: mm

Size	Thickness(mm)	PCS/PKG
20x10	0.58	30
50x25	1.1/ 1.3	10
100x50	1.4/ 1.6	4
PVC Divided Strip	1.5	



Single compartment

A single compartment trunking with a 100x50mm profile.

Robust and Durable

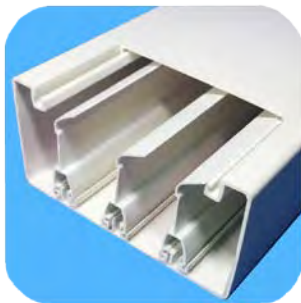
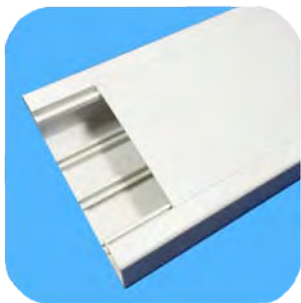
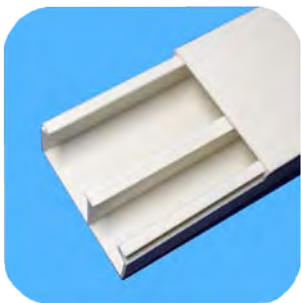
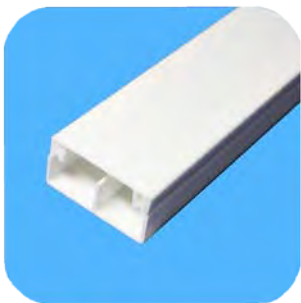
Single body design makes it strong and designed to last

Available in customized colors

Hot sale colors are white and grey.

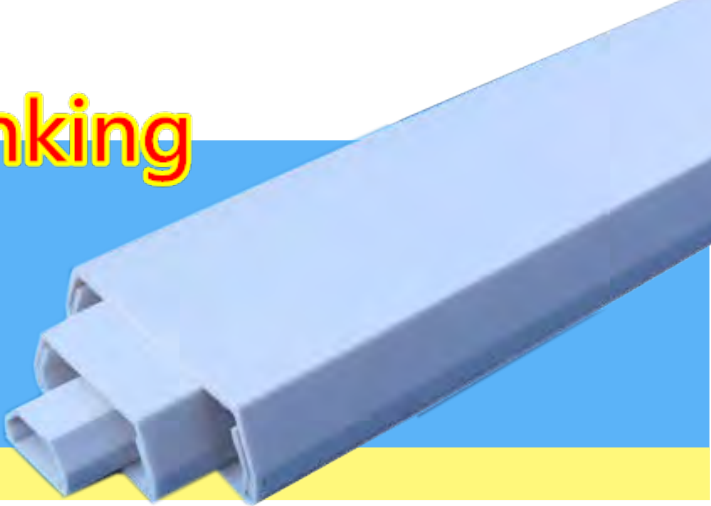
Extra compartment

It could be divided in to a 2, 3 or 4 compartment trunking using divider strips.



PVC Trapezoid Trunking

- Standard Length: 2000mm
- Standard Color: White
- Provide great cable protection
- Shock resistant and self-extinguishing thermoplastic
- Lead-free material



Product Description

Material	High impact resistant PVC compound, giving a durable yet versatile finish.
Structure	Made up of duct bottom and lid.
Feature	<ul style="list-style-type: none">• Integrated nonskid liners and unique cover designs insures the duct cover will not slide once installed or during vibration;• Smooth corners and edges that will not abrade wiring or irritate hands;• Specially formulated lead-free PVC material meet the flame retardant requirements.

Parameter

Unit: mm

Size(mm)	Thickness(mm)	PCS/PKG
20x10	0.9	30
24x14	1.6	10
39x19	1.7	15
60x22	1.85	25



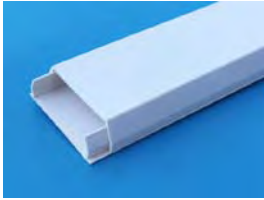
20x10mm



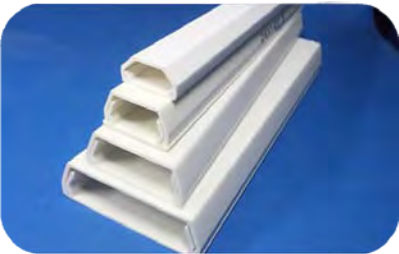
24x14mm



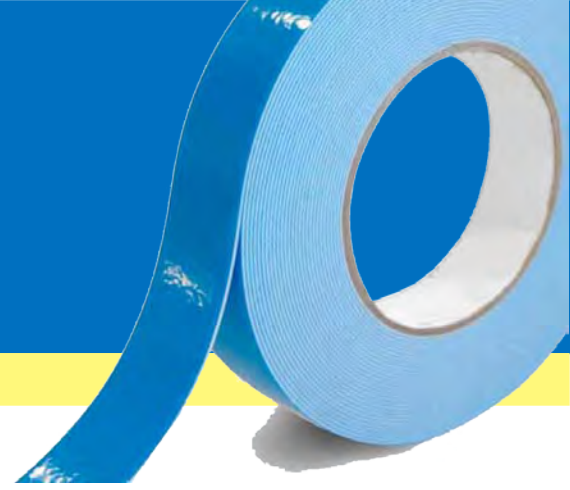
39x19mm



60x22mm



Foam Seal Double-Sided Adhesive Tape



Automatic sticking equipment

Feature

- 1) Double sided adhesive
- 2) Strong stickiness
- 3) Special glue used for wiring duct
- 4) It's designed with strong adhesive to keep the sealant in place.
- 5) It prevents stretching during installation and permits fast application

Parameter

	Cover layer	Tape
Material	PET Release Tape / PE Film	PE Foam Tape
Available Color	White / Red / Blue / Yellow / Dark Green	White / Black

* Customized color is available; more MOQ is required for special color.

* Regular width of adhesive tape is: min. 7mm to max. 85mm.

* Customized width could be made;

